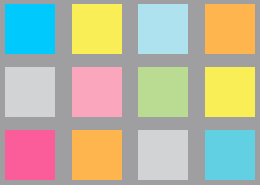


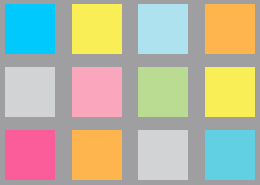
# Securing Outstanding Provision for Yarnfield Primary School

*6<sup>th</sup> March 2018*



# History

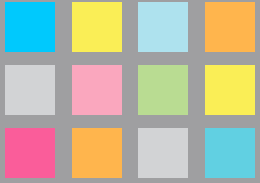
- Head/ Executive Head / Interim Head of 6 schools –all large, all serving challenging communities
- Serious Weakness – Outstanding (7 terms)
- School Improvement adviser for 3 different LAs
- Special Measures – Outstanding (5 terms)
- NLE
- Director of Education of one of the Largest MATs in the country



# Vision

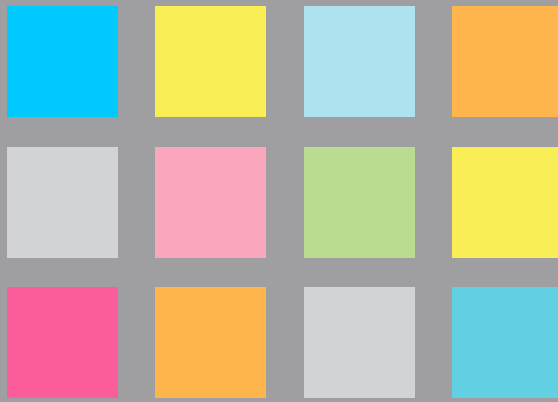
To equip our children with the knowledge, skills and confidence to be whatever they aspire to be

- Through raising standards we transform lives

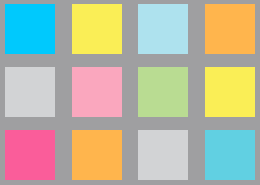


# What / How?

- High quality leadership
- Superb teaching
- Excellent outcomes
- Nurturing the whole child

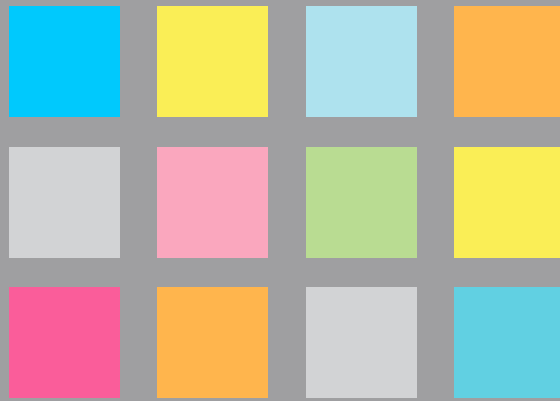


So what are the key things that  
will really make the  
difference?



# Leadership

- Investing in our great leaders and making sure we support them to be the best they can be to deliver our vision
- Using our leaders really well to make sure they support and develop our staff teams, so that they can excel
- Being precise and rigorous in checking the impact we are having on our children to ensure that we are constantly moving in the right direction

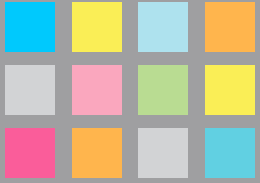


Leaders need to secure a clear vision and then create a climate, culture and ethos where everyone is able to thrive.



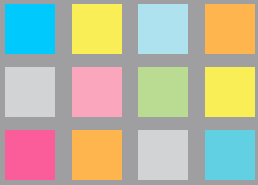
So what have we done so far,  
and what difference has it  
made?





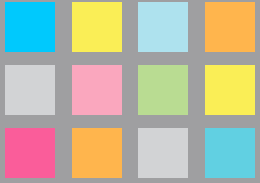
# Improved Assessment

- Tracking System
- Full detailed picture of progress
- Assessment Cycle
- Responding to tracking by adjusting teaching



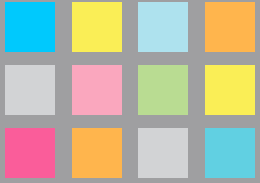
# Maths

- Training for Teachers
- Subject knowledge improved
- Introduction of Effective Maths
- Teaching supported by expert materials
- Continued support for teachers from expert maths teacher
- Teachers expertise further developed



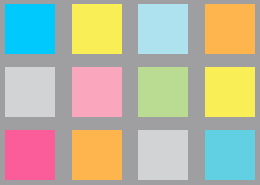
# Reading

- Reviewed the teaching cycle for reading
- Appointed Reading Leader
- Investment in Resources/ Reading Environment
- Raised expectations, explicit teaching of reading
- Expert focus on developing reading based on research
- Developing children as readers



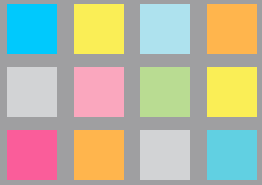
# Quality First Teaching

- Expert support for planning
- Support to assess accurately
- Bespoke training to develop teaching
- Increased expectation in lessons
- Teachers really know their children
- Good and outstanding teaching has increased



## Key Features...

- Unswerving Vision
- Uncompromising focus on goals and attention to detail
- High expectation
- High aspiration
- Superb environment
- Quality first teaching
- **Developing the whole child/student**



# Leadership

- Leaders need to secure a clear vision and then create a climate, culture and ethos where everyone is able to thrive.